



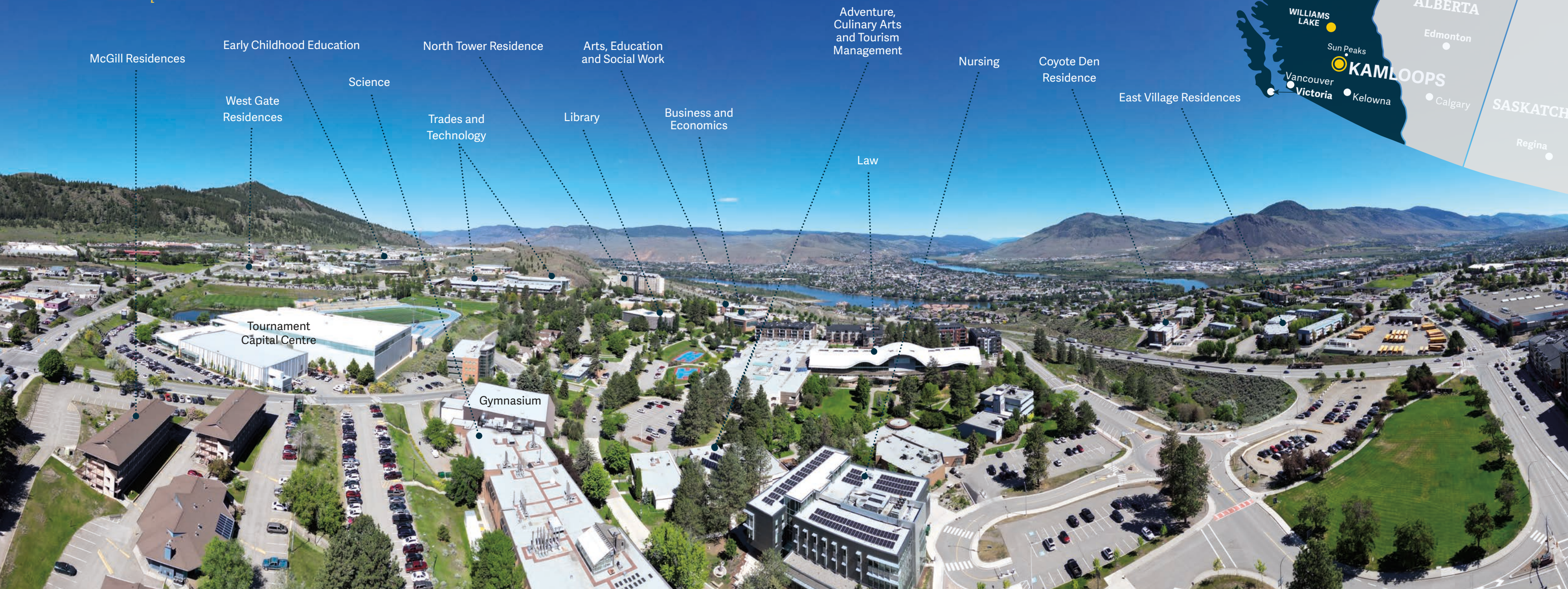
THOMPSON  
RIVERS  
UNIVERSITY

# DRIVER

2025-26 VIEWBOOK

# WELCOME WEYT-KP

Secwepemctsin



**Territorial Acknowledgment**

Thompson Rivers University campuses are on the traditional lands of the Tk'emlúps te Secwépemc (Kamloops campus) and the T'exelc (Williams Lake campus) within Secwepemcúl'ecw, the traditional and unceded territory of the Secwépemc. The region TRU serves also extends into the territories of the St'át'imc, Nlaka'pamux, Tsilhqot'in, Nuxalk, Dakelh, and Syilx peoples.

**Hadih**  
Northern Dakelh

**hunilht'ih**  
Tsilhqot'in

**ʔéx kw'ń**  
Nlaka'pamux

**kalhwá7acw**  
Lillooet/Státimcets

**Atelihai**  
Inuit/Inuktitut

**Tawnshi**  
Michif

**Dahooja**  
Southern Dakelh

**Tansi**  
Cree

**way**  
Syilx

**Yaw**  
Nuxalk

**Aniin**  
Ojibway/  
Anishinaabe

# CHOOSE YOUR

This is just a snapshot of some of the subjects you can study here. Dive deeper into your interests with program majors and minors. Visit [tru.ca/programs](http://tru.ca/programs) for more information.

# PATH

Craving adventure?

## ADVENTURE AND TOURISM | pages 23-24

Adventure Studies  
Tourism, Sport, Resort and Event Management



Intrigued by the world around you?

Inspired to make the world a better place?



## LAW | page 34

Juris Doctor



## HEALTHCARE | pages 27-28

Nursing  
Health Care Assistant  
Practical Nursing (WL)  
Respiratory Therapy

Looking to build creative thinking and communication skills?



## ARTS | pages 24-25

Literatures	Digital Journalism
Languages	Public Relations
Performing Arts	Philosophy
International Studies	History
Environment	Police and Justice Studies
Culture	Politics
Society	Psychology
Communication	

## BUSINESS AND ECONOMICS | pages 26

Accounting and Finance  
Business Law  
Economics  
Human Enterprise and Innovation Management  
International Business Information and Supply Chain Marketing



Have big entrepreneurial dreams?

## SCIENCE | pages 28-30

Architectural and Engineering Technology  
Biological Sciences  
Chemistry  
Computing Science  
Data Science  
Engineering and Applied Science  
Mathematics and Statistics  
Natural Resource Sciences  
Physics and Geology  
Regenerative Agriculture (WL)  
Veterinary Technology



## TRADES AND TECHNOLOGY | pages 32-33

Automotive	Millwright
Carpentry	Plumbing
Culinary Arts	Power Engineering
Electrical	Refrigeration and Air Conditioning
Instrumentation	Retail Meat Processing
Horticulture	Water Treatment
Heavy Duty and Commercial Transport	Welding
Heavy Mechanical	



## EDUCATION AND SOCIAL WORK | pages 26-27, 30

English Language Learning and Teaching  
Education  
Social Work and Human Service  
University and Employment Preparation



Interested in teaching or helping others?

Prefer studying online?

## OPEN LEARNING | [tru.ca/distance](http://tru.ca/distance)

Adult Basic Education  
Arts  
Business and Management Studies  
Education and Social Work  
General Studies  
Health Sciences  
Science  
Technology  
Tourism



Curious about how things work, or enjoy working with your hands?



# FIND YOUR RU

# YOUR CHOICE

## ON CAMPUS

### Come and join us

- Take classes in person
- Be part of the campus community
- Explore campus green space
- Choose from 140+ programs
- Meet professors face to face
- Join clubs and activities
- Live close to your classmates

## OPEN LEARNING (ONLINE AND DISTANCE)

### We'll meet you where you're at

- |  |   |
|--|---|
| Live anywhere  | <b>Programs unique to Open Learning</b> |
| Get academic credit for life or career experiences         | Bachelor of Health Science              |
| Self-paced courses with longer timelines for completion    | Medical Lab Assistant                   |
| Partnership agreements with Canadian Colleges/Universities | General Studies                         |
|  | Bachelor of Technology                  |

## COMBINE OL AND CAMPUS

### Your educational path should be flexible

You can enrol in on-campus programs and take additional Open Learning (OL) courses. You can also learn by distance through OL, and take a few courses on campus.

## What works best for you?

Contact us to learn more.



## #1 in sustainability

TRU was the first Canadian university to earn the highest possible rating from the Association for the Advancement of Sustainability in Higher Education.



## Two outdoor playing courts

ready for your basketball, street hockey or pickleball skills

## Diversity

2,700+ Indigenous students  
6,000+ International students  
from 112 countries

**60+**  **ONLINE PROGRAMS**

**27,000+** students

14,000 on campus  
13,000 online with Open Learning

**140+**  
ON CAMPUS  
**PROGRAMS**

AVERAGE  
CLASS SIZE  
**31**

OVER **80**  
STUDENT CLUBS

**1 of 6**

 **RESEARCH**  
UNIVERSITIES IN BC

Kamloops takes its name from the Secwepemctsin word *Tk'emlúps*, which means *meeting of the rivers*

The North and South Thompson Rivers **meet** in the centre of the city.



**2000+** hours  
of sunshine per year

**Farmers' market**  
**Cafés**



**Music in the park**

**Food trucks**



**45 minutes**

to skiing, snowboarding and mountain biking at Sun Peaks — the second largest ski area in Canada

**Population 108,000**

3rd fastest growing metropolitan area in Canada

**3.5 hours** by road or  
**1 hour** by air from Vancouver

**175+** mountain  
biking trails 

**You belong here.**



HERE TO HELP YOU

# THRIVE

The Wellness Centre is a safe place for students to hang out, take a nap, read a book, play a game, have a cup of tea, learn about helpful resources, and access one-on-one health and wellness support.

## YOUR SUPPORT NETWORK ON CAMPUS

- Wellness Centre
- Counselling
- Academic Advising
- Accessibility Services
- Writing Centre
- Science Help Centre
- Early Alert
- Multi-faith Chaplaincy

Find out more about student services at [tru.ca/services](https://tru.ca/services)

## GET INVOLVED

- Indigenous Awareness Week
- TRU Students' Union (TRUSU)
- Leisure Exploration Activity Program (LEAP)
- CFBX campus radio station
- The Omega student newspaper
- TRUSU Pride
- TRUSU Clubs
- TRU Job Fair
- Annual TRU Powwow
- IDays (International Days)
- Peer mentor programs
- Campus Tree Program

## Experiential Learning

Connect your education to the career you want through hands-on learning experiences.

Make the most of your experience.

TAKE ADVANTAGE OF



## EXPERIENCE MORE

With co-op, you can alternate work and study terms to blend on-campus learning with career-related work experience.

Check out the Experiential Learning Hub for opportunities and resources.



Ahana Ahluwalia worked four co-op terms as a software developer for Telus Business Solutions while completing her Bachelor of Software Engineering.

Ahluwalia worked on a team automating, testing, developing and deploying an API platform and assisted with solutions related to network security.

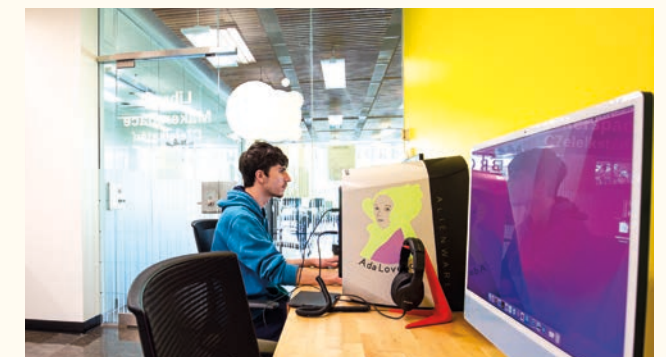
"I had a great co-op experience, partly because my employer treated me like a team member from day one. They gave me the keys to the Ferrari and let me get in the driver's seat, so to speak."

– Ahana Ahluwalia

## NEED A CREATIVE OUTLET?

### Check out the TRU Library Makerspace

- 3D printers and scanner
- Cricut sticker maker
- Sewing machines and embroidery equipment
- VR rooms
- Recording studio
- Button maker





## RECREATION

Join WolfPack Recreation for intramural team sports, drop-in sports, or fitness and yoga classes.

Play dodgeball, badminton, volleyball, soccer, basketball, cricket or pickleball. Catch bootcamp, circuit, strength, stretch, slow flow, dance... take your pick!

[tru.ca/recreation](http://tru.ca/recreation)

## ATHLETICS

WolfPack student athletes and fans contribute to TRU's vibrant campus spirit.

All TRU students get free admission to regular season home games.

Varsity teams compete at the U SPORTS level, and include basketball, soccer and volleyball. Club sports include baseball and cheerleading.

If you are interested in trying out for a team, fill out the recruitment form at

[gowolfpack.ca](http://gowolfpack.ca)

**Go WolfPack!**



# BACK



# THE WOLFPACK



# Be supported throughout your journey

On the Kamloops and Williams Lake campuses, you'll find comfortable spaces to socialize, study, use computers, get support and take a break from your daily routine.

Celebrate your Indigenous heritage and traditions while accessing tools and resources for your success as a student. Meet with an Elder for traditional guidance and conversation. Connect with your peers, share experiences and enjoy a free meal at weekly soup circles.

In Williams Lake, the Coordinator of Indigenous Services offers guidance and support for all aspects of your educational journey.

On the Kamloops campus, you'll have access to Indigenous counsellors and can also find a student mentor through the Indigenous Mentor program.



## TRU's Indigenous Education Centre

Currently under construction, TRU Kamloops Indigenous Education Centre is set to be a hub for cultural celebration, academic support, and community connection for Indigenous learners, faculty, and staff.



### KAMLOOPS

Cplul'kw'ten — "The Gathering Place" in Secwepemctsin — is your home away from home.



### WILLIAMS LAKE

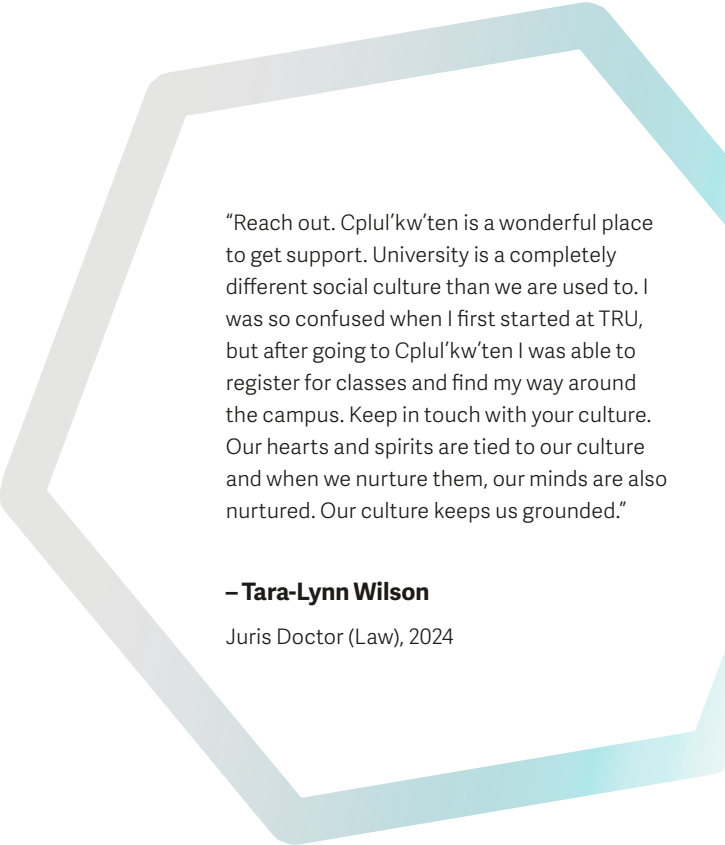
Join us at the Gathering Place

TRU welcomes Indigenous students from regional Secwépemc, Carrier, T̓silhqot̓in, St'át'imc, Okanagan, Nuxalk, Nlaka'pamux and Métis communities, as well as those from Inuit communities and others across the country.

**2,797** Self-identified Indigenous students  
**10%** of total student population

"I believe there is a place for everyone in post-secondary education. As a former TRU student, I understand how intimidating post secondary can seem. It's my role to make the transition from high school or community to TRU as smooth as possible for you."

– **Jamieson McInroy**  
*Qelmúcw (Indigenous) Future Students Advisor*

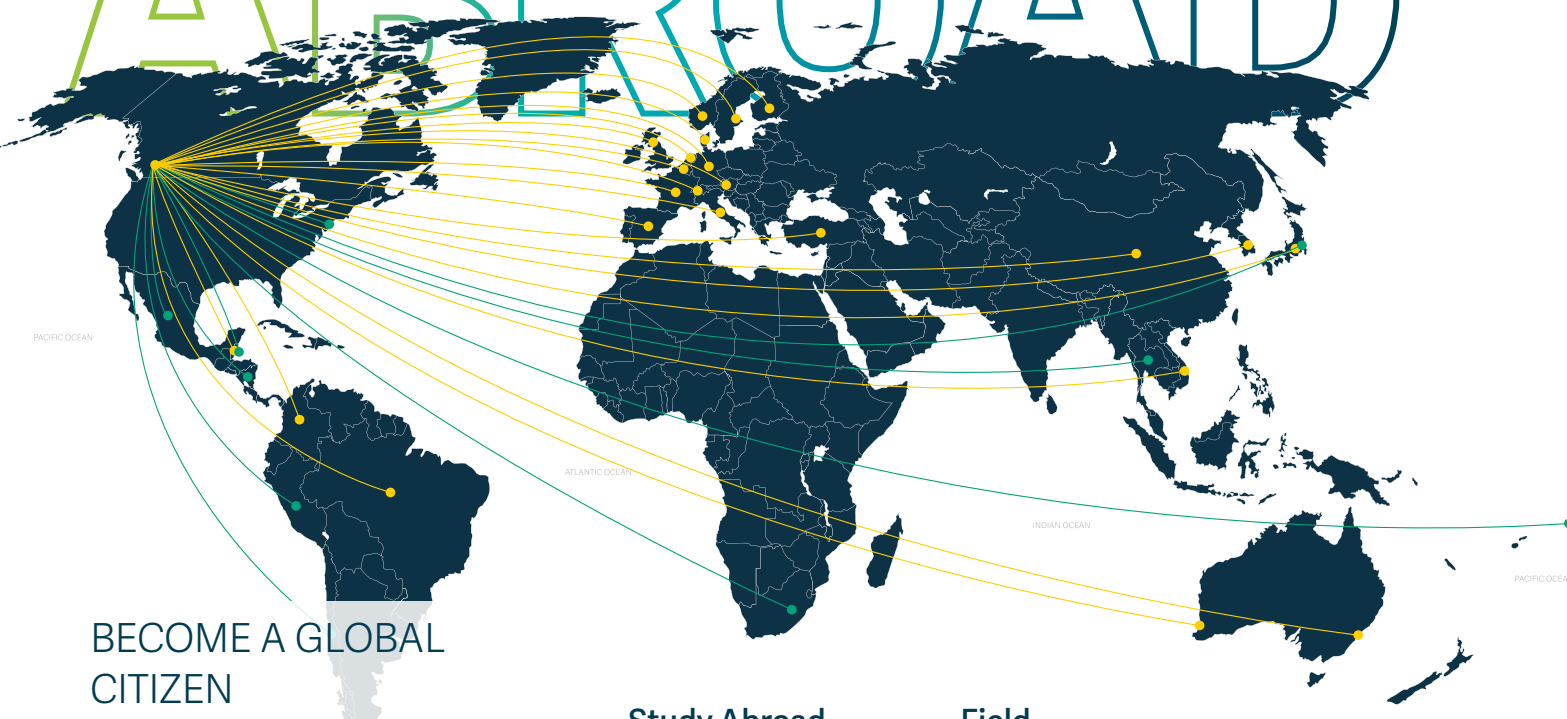


"Reach out. Cplul'kw'ten is a wonderful place to get support. University is a completely different social culture than we are used to. I was so confused when I first started at TRU, but after going to Cplul'kw'ten I was able to register for classes and find my way around the campus. Keep in touch with your culture. Our hearts and spirits are tied to our culture and when we nurture them, our minds are also nurtured. Our culture keeps us grounded."

– **Tara-Lynn Wilson**  
 Juris Doctor (Law), 2024

**Here, you'll find a sense of belonging.**

# STUDY ABROAD



## BECOME A GLOBAL CITIZEN

Take a semester or two abroad and embark on an overseas learning journey like no other. Broaden your perspective, strengthen intercultural skills, make new friends and expand job opportunities, all while earning course credits.

Field School placements range from two to six weeks in length and are another great option for an out-of-the-classroom, international experience.

### Study Abroad

- Australia
- Austria
- Belgium
- Belize
- Chile
- China
- Colombia
- Denmark
- Estonia
- Finland
- France
- Germany
- Italy
- Jamaica
- Japan
- Korea
- The Netherlands
- New Zealand
- Norway
- Spain
- Sweden
- Switzerland
- Poland
- UK
- USA
- Vietnam

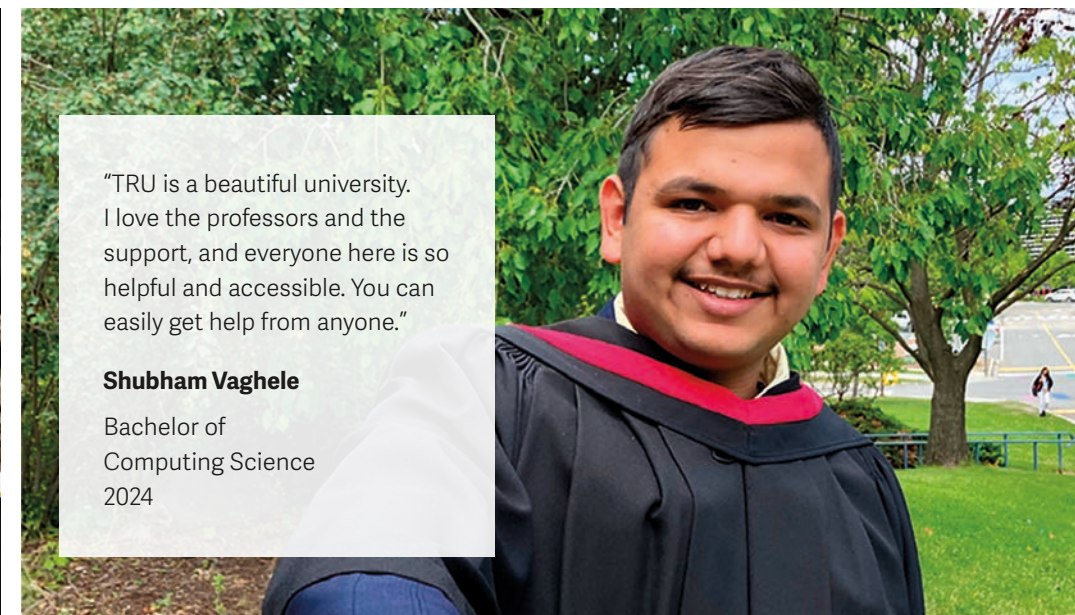
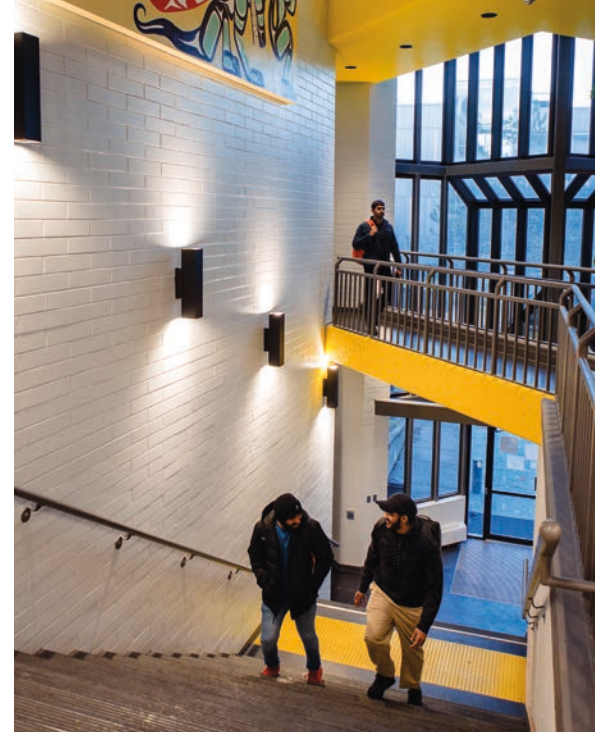
### Field Schools

- Australia
- Belize
- Eastern Europe
- Italy
- Japan
- Mexico
- Nepal
- New Zealand
- Peru
- USA
- Vietnam

**!** Study Abroad and Field School opportunities vary each year.

If you are interested in a country not listed on this map, or want more information on how to get started, contact [studyabroad@tru.ca](mailto:studyabroad@tru.ca).

[tru.ca/studyabroad](https://tru.ca/studyabroad)



"TRU is a beautiful university. I love the professors and the support, and everyone here is so helpful and accessible. You can easily get help from anyone."

**Shubham Vaghele**  
Bachelor of Computing Science  
2024



# YOUR HOME BASE



## CAMPUS HOUSING

The space where you recharge is important. Why not choose campus housing? It's the closest and most convenient option!

Live walking distance from class and join a vibrant, active community of students from all over the world.

Apply to TRU **before January 31, 2025** to be considered for priority on-campus housing for Fall 2025. On your TRU application, select 'yes' when asked about being considered for on-campus housing.

Visit [tru.ca/housing](https://tru.ca/housing) for more info.

### Eat on campus

TRU housing does not include a meal plan. Each suite has a kitchenette or access to common kitchens, and supermarkets are located a short walk from campus. And right on campus, you'll find 11 different dining options to snack, eat and grab a coffee.

Find out more about food available on campus:

[tru.ca/food](https://tru.ca/food)

**Spaces you can  
make your own.**



**NEW**

### Coyote Den - Skelepéllcw

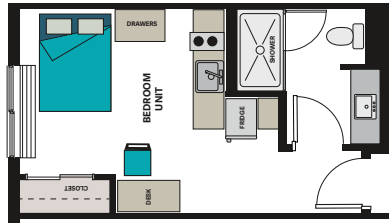
The new East Village residence is centrally located and within walking distance of campus, shopping and transit. Each unit has a private entrance, bathroom and apartment-sized kitchen. Shared and single bedroom suites are available.

**COYOTE DEN** SEPTEMBER – APRIL

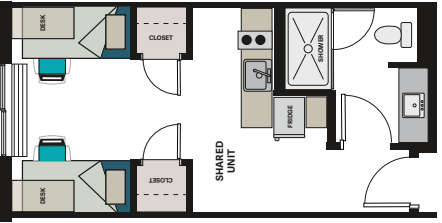
Application fee	Single Room	Double Room (shared)
\$100	\$10,000*	\$4,388*

\*Rates are for the 2024-25 year and are subject to change without notice. Floor plans may slightly differ from room to room.

Coyote Den Single Room



Coyote Den Double Room





North Tower



## North Tower

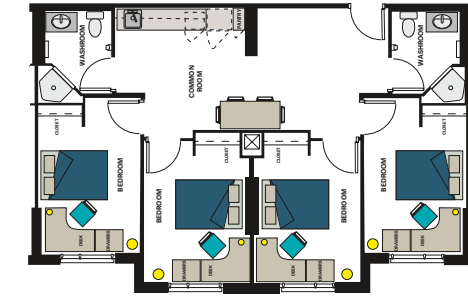
Enjoy one of the best views in the city at the 11-story North Tower. Access premium amenities such as a cardio room, dance studio, patio with large BBQ, games room and regular social activities.

**NORTH TOWER** SEPTEMBER – APRIL

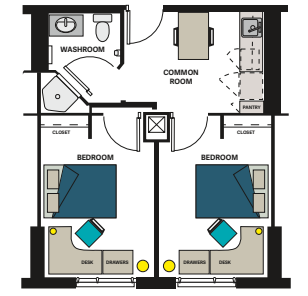
Application fee	2 or 4 bedroom suite
\$100	\$9,100*

*\*Rates are for the 2024-25 year and are subject to change without notice. Floor plans may slightly differ from room to room.*

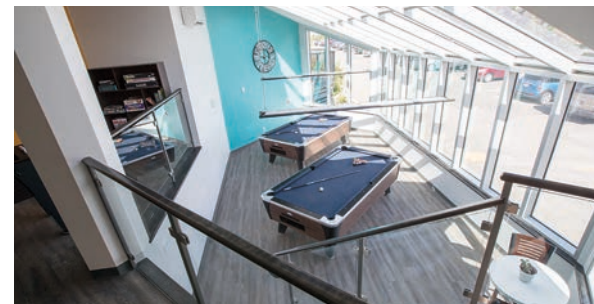
North Tower 4 Bedroom Plan



North Tower 2 Bedroom Plan



McGill Residence



## McGill Residence

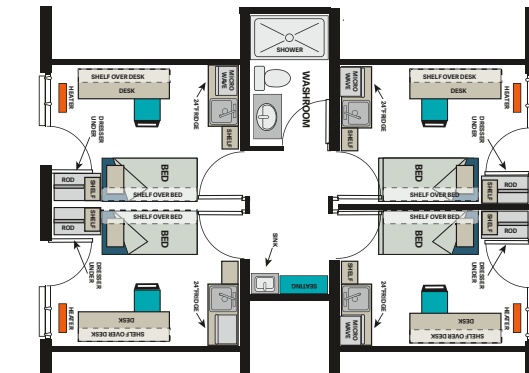
Ideal for students looking to live in an active, close-knit community. McGill Residence has amenities that include laundry, games room, kitchen and study room.

**MCGILL RESIDENCE** SEPTEMBER – APRIL

Application fee	Room
\$100	\$6,075*

*\*Rates are for the 2024-25 year and are subject to change without notice. Floor plans may slightly differ from room to room.*

McGill Residence 4 Bedroom Plan



East Village



## East Village

Have the independence of off-campus living with the convenience of on-campus life at East Village. This location is ideal for students looking for a more independent, mature community with student-friendly amenities.

**EAST VILLAGE** SEPTEMBER – APRIL

Application fee	4 bedroom suite
\$100	\$6,465*

*\*Rates are for the 2024-25 year and are subject to change without notice. Floor plans may slightly differ from room to room.*

East Village 4 Bedroom Plan



# HOW TO APPLY



## What do you need to get in?

### GENERAL ADMISSION REQUIREMENTS

TRU programs generally require BC high school graduation or equivalent. Exceptions to this requirement are shown in the program admission requirements listed on [pages 23-33](#).

You may have the equivalent of BC high school graduation if you have completed:

- the BC Adult Graduation (Adult Dogwood) diploma, or previously the ABE Provincial diploma
- the General Education Diploma (GED)

In some circumstances, certain programs may accept students without high school graduation under mature student status.

### PROGRAM SPECIFIC ADMISSION REQUIREMENTS

In addition to meeting the general admission requirements you will need to meet your program's specific admission requirements listed on [pages 23-33](#) or see:

[tru.ca/programs](http://tru.ca/programs)

### MISSING AN ADMISSION REQUIREMENT?

**If you don't meet your program requirements, you can upgrade.**

In some programs, you may take an upgrading course alongside other first-year courses, so you don't have to wait to begin your studies. If you aren't sure where to start, let us know. We are here for you.



GO TO  
**TRU.CA/APPLY**  
Application fee: \$32.91

### SECONDARY SCHOOL COURSE EQUIVALENTS

Don't see your completed course listed in the program requirements chart? High schools across Canada have different courses that are equal in value (equivalent) that meet our program requirements.

Be sure to check your courses at:

[tru.ca/equivalents](http://tru.ca/equivalents)

### TRU START

BC high school students can take select TRU programs and courses while still in high school

[tru.ca/trustart](http://tru.ca/trustart)

### ADVANCED CREDIT AND ENRICHED PROGRAMS

Students who complete enriched secondary school courses can earn first year university credit.

**International Baccalaureate:** for higher-level courses passed with a grade of 5 or higher

**Advanced Placement:** for approved subjects passed with a grade of 4 or higher

[tru.ca/asep](http://tru.ca/asep)



### UNIVERSITY AND EMPLOYMENT PREPARATION

#### University Preparation

Upgrade your skills. Complete the courses you need to enter career, vocational and academic programs, or choose from adult basic education diplomas including the BC Adult Graduation Diploma (the equivalent to high school completion).

[tru.ca/uprep](http://tru.ca/uprep)

#### Education and Skills Training

Gain workplace skills and independence with the ESTR program for students with cognitive exceptionalities.

[tru.ca/estr](http://tru.ca/estr)

#### English for Academic Purposes Academic Preparation Program

Develop your ability to understand, speak, read and write English and prepare for academic study in this nationally recognized five-level program.

[tru.ca/esl](http://tru.ca/esl)

## Why self-identify as Indigenous on your application?



On your application form, you will find an optional section on Indigenous self-identification. Checking "yes" gives you the opportunity to receive information about services and events that might be of interest. Some TRU programs allocate seats to students who identify as Indigenous, and you may also be eligible for priority access to housing. Your information is kept confidential.



### QUESTIONS?

Contact the  
Future Students Office

Toll Free: 1-888-663-1653  
futurestudents@tru.ca



tru.ca/moreinfo

## Application Deadlines

Applications open October 1 for fall 2025,  
winter 2026 and summer 2026.

Deadlines to apply for admission are as follows.

### PROGRAM-SPECIFIC APPLICATION DEADLINES

Applications are reviewed and offers are made after the  
application deadline.

PROGRAM	APPLICATION DEADLINE
Bachelor of Education (Elementary)	January 15
Bachelor of Science in Nursing	January 31
Respiratory Therapy Diploma	February 1
Veterinary Technology Diploma	February 1
Juris Doctor (Law)	February 10
Bachelor of Education (Secondary STEM)	February 15
Bachelor of Social Work	February 28
Trades Foundation and Apprenticeship Programs	Intake dates vary. Applications are accepted year-round.
Graduate programs	Intake dates and application deadlines vary. See <a href="http://tru.ca/graduate-studies">tru.ca/graduate-studies</a> for details.

### ALL OTHER PROGRAMS

Applications are reviewed and assessed upon receipt of required  
documents. Offers are made year round.

INTAKE	APPLICATION DEADLINE
Fall (September)	May 1
Winter (January)	September 1
Summer (May)	January 1

Note: not all programs have a summer and winter intake.

Programs will continue to accept applications beyond these  
deadlines where space is available. Check [tru.ca/programs](http://tru.ca/programs) for the  
most up to date availability.

### APPLY EARLY!

Some programs have limited capacity.

## APPLY NOW



# PROGRAMS AND ADMISSION REQUIREMENTS

L	C	IA	✈️	🌐
<b>Laddering options</b> Students can apply credit earned in this credential towards a higher-level program.	<b>Co-op</b> Alternate work and on-campus study terms.	<b>Indigenous Admissions</b> Reserved seats for students who self-identify as Indigenous and meet admission requirements.	<b>Study Abroad</b> Take a semester or two abroad while still earning course credits.	<b>Available Online</b> Program or courses are also available through TRU Open Learning.

## Adventure and Tourism

L	ADVENTURE GUIDE CERTIFICATE	ENGLISH	73% in English Studies 12 or English First Peoples 12
		MATH	Any Math 11
	ADDITIONAL REQUIREMENTS	Completion of an Adventure Studies Program Information Session; Student Information Form (includes outdoor experience logbook); Supplemental documents (resumé, cover letter, references); 19 years of age on Sept 1 of the academic year	
L	ADVENTURE GUIDE DIPLOMA	ENGLISH	73% in English Studies 12 or English First Peoples 12
		MATH	Any Math 11
	ADDITIONAL REQUIREMENTS	Completion of the Adventure Guide Certificate; Updated Student Information Form (includes outdoor experience logbook); Supplemental documents	
✈️ C 🌐	BACHELOR OF TOURISM MANAGEMENT	ENGLISH	73% in English Studies 12 or English First Peoples 12
		MATH	60% in Foundations of Math 11 or Pre-Calculus 11 or Foundations of Math 12
	ADDITIONAL REQUIREMENTS	Students with 67% in Pre-Calculus 12 or Foundations of Math 12 will be exempt from MATH 1100	<b>Majors:</b> Adventure Studies, Entrepreneurship, General, Tourism Studies  <b>Exit credential after two years:</b> Tourism Management Diploma
	<b>Don't meet the requirements for this program?</b> You will be offered a seat in the pre-tourism program, a pathway for you to upgrade while taking first year tourism courses.		
C L 🌐	EVENTS AND CONVENTIONS MANAGEMENT DIPLOMA	ENGLISH	73% in English Studies 12 or English First Peoples 12
		MATH	60% in Foundations of Math 11, Pre-Calculus 11 or Foundations of Math 12
	ADDITIONAL REQUIREMENTS	Students with 67% in Pre-Calculus 12 or Foundations of Math 12 will be exempt from MATH 1100	<b>Don't meet the requirements for this program?</b> You will be offered a seat in the pre-tourism program, a pathway for you to upgrade while taking first year tourism courses.
C L	RESORT AND HOTEL MANAGEMENT DIPLOMA	ENGLISH	73% in English Studies 12 or English First Peoples 12
		MATH	60% in Foundations of Math 11, Pre-Calculus 11 or Foundations of Math 12
	ADDITIONAL REQUIREMENTS	Students with 67% in Pre-Calculus 12 or Foundations of Math 12 will be exempt from MATH 1100	<b>Don't meet the requirements for this program?</b> You will be offered a seat in the pre-tourism program, a pathway for you to upgrade while taking first year tourism courses.

## Adventure and Tourism, continued

<b>SPORT EVENT MANAGEMENT DIPLOMA</b>	<b>ENGLISH</b>	73% in English Studies 12 or English First Peoples 12
	<b>MATH</b>	60% in Foundations of Math 11, Pre-Calculus 11 or Foundations of Math 12
	<b>ADDITIONAL REQUIREMENTS</b>	Students with 67% in Pre-Calculus 12 or Foundations of Math 12 will be exempt from MATH 1100
<b>C L</b>	<p>Don't meet the requirements for this program? You will be offered a seat in the pre-tourism program, a pathway for you to upgrade while taking first year tourism courses.</p>	
<b>TOURISM MANAGEMENT DIPLOMA</b>	<b>ENGLISH</b>	73% in English Studies 12 or English First Peoples 12
<b>C L</b>	<b>MATH</b>	60% in Foundations of Math 11, Pre-Calculus 11 or Foundations of Math 12
	<b>ADDITIONAL REQUIREMENTS</b>	Students with 67% in Pre-Calculus 12 or Foundations of Math 12 will be exempt from MATH 1100
<p>Don't meet the requirements for this program? You will be offered a seat in the pre-tourism program, a pathway for you to upgrade while taking first year tourism courses.</p>		

## Arts, Humanities and Social Sciences

<b>INDIGENOUS STUDIES CERTIFICATE</b>	<b>ENGLISH</b>	73% in English Studies 12 or English First Peoples 12	
Upgrading available in program			
<b>ASSOCIATE OF ARTS</b>	<b>ENGLISH</b>	73% in English Studies 12 or English First Peoples 12	
Upgrading available in program			
<b>BACHELOR OF ARTS</b> L C O	<b>ENGLISH</b>	73% in English Studies 12 or English First Peoples 12	<p><b>Majors or minors:</b> Applied Creative Arts, Criminology (blended online), Economics, Economic and Political Studies, English, Geography and Environmental Studies, History, Mathematics, Mathematics and Economics, Philosophy, Politics and International Studies, Psychology, Sociology, Theatre</p> <p><b>Concentrations:</b> Creative and Performing Arts, Social Sciences, Humanities, Humanities and Social Sciences</p> <p><b>Minors only:</b> Creative Writing, Digital Journalism, Environmental Economics and Sustainable Development, Geography, International Professional Communication, Language and Global Studies, Management, Media Studies, Political Studies, Public Relations</p> <p><b>Exit credential after two years:</b> Associate of Arts</p>
	<b>ADDITIONAL REQUIREMENTS</b>	Math 11 or higher strongly recommended for students pursuing Education or a major in Geography and Environmental Studies, Sociology or Psychology; Recommended to take any second languages to grade 12	
	Upgrading available in program		

## Arts, Humanities and Social Sciences, continued

<b>BACHELOR OF COMMUNICATION AND DIGITAL JOURNALISM</b> L C	<b>ENGLISH</b>	73% in English Studies 12 or English First Peoples 12	<p><b>Majors:</b> Digital Journalism, Media Studies, Public Relations</p>
	Upgrading available in program		
<b>BACHELOR OF INTERDISCIPLINARY STUDIES</b> L C	<b>ENGLISH</b>	73% in English Studies 12 or English First Peoples 12	<p>Completion of 60 credits; Third year entry; See <a href="http://tru.ca/programs">tru.ca/programs</a> for admission requirements</p>
	<b>ADDITIONAL REQUIREMENTS</b>		
<b>CULTURAL AND SOCIAL EXPLORATIONS CERTIFICATE</b>	<b>ENGLISH</b>	73% in English Studies 12 or English First Peoples 12	<p>Upgrading available in program</p>
<b>POLICE AND JUSTICE STUDIES DIPLOMA</b> L IA L	<b>ENGLISH</b>	73% in English Studies 12 or English First Peoples 12	<p>Statement of Career Objectives; Resumé</p> <p><b>Note:</b> some required courses require physical fitness standards and may require a criminal record check</p>
	<b>ADDITIONAL REQUIREMENTS</b>		
<b>WORLD LANGUAGES AND CULTURES CERTIFICATE</b>	<b>ENGLISH</b>	73% in English Studies 12 or English First Peoples 12	<p>Upgrading available in program</p>
<b>BACHELOR OF BUSINESS ADMINISTRATION</b> L C	<b>ENGLISH</b>	73% in English Studies 12 or English First Peoples 12	<p><b>Majors or minors:</b> Accounting, Economics, Entrepreneurship, Finance, General Business, Human Resource Management, International Business, Marketing, Supply Chain Management</p> <p><b>Minors only:</b> Business Law, Environmental Economics and Sustainable Development, Financial Markets and Institutions, Leadership, Project Management</p> <p><b>Exit credential after two years:</b> Associate of Commerce and Business Administration Diploma</p> <p><b>TRU offers a dual degree with the Bachelor of Business Administration and the Bachelor of Computing Science. Students must meet admission requirements for both programs.</b></p>
	<b>MATH</b>	67% in Foundations of Math 12 or Pre-Calculus 12	
	Upgrading available in program		
<b>ACCOUNTING TECHNICIAN DIPLOMA</b> L O	<b>ENGLISH</b>	73% in English Studies 12 or English First Peoples 12	<p>Upgrading available in program</p> <p><b>Exit credential after first year:</b> Business Foundations Certificate</p>
	<b>MATH</b>	67% in Foundations of Math 12 or Pre-Calculus 12	

## Business, Economics and Management, continued

<b>EXECUTIVE ASSISTANT DIPLOMA</b> <b>L</b>	<b>ENGLISH</b>	73% in English Studies 12 or English First Peoples 12
	<b>MATH</b>	67% in Foundations of Math 12 or Pre-Calculus 12
	<b>ADDITIONAL REQUIREMENTS</b>	Completion of the TRU Administrative Assistant Certificate, or equivalent one year certificate program.
<b>FIRST NATION APPLIED ECONOMICS CERTIFICATE</b>  <i>Apply to this program directly through the TULO Center</i> <b>tulo.ca</b>	<b>ENGLISH</b>	73% in English Studies 12 or English First Peoples 12
	<b>MATH</b>	67% in Foundations of Mathematics 11 or Pre-Calculus 11
	<b>ADDITIONAL REQUIREMENTS</b>	Basic computer literacy and familiarity with word processing and spreadsheet software. Upgrading available in program
<b>FIRST NATION TAXATION ADMINISTRATION CERTIFICATE</b>  <i>Apply to this program directly through the TULO Center</i> <b>tulo.ca</b>	<b>ENGLISH</b>	73% in English Studies 12 or English First Peoples 12
	<b>MATH</b>	67% in Foundations of Mathematics 11 or Pre-Calculus 11
	<b>ADDITIONAL REQUIREMENTS</b>	Basic computer literacy and familiarity with word processing and spreadsheet software. Upgrading available in program
<b>MANAGEMENT DIPLOMA</b> <b>L</b>	<b>ENGLISH</b>	73% in English Studies 12 or English First Peoples 12
	<b>MATH</b>	67% in Foundations of Math 12 or Pre-Calculus 12 Upgrading available in program
		<i>Exit credential after first year:</i> Business Foundations Certificate

## Education

<b>BACHELOR OF EDUCATION</b> <i>Elementary</i>	<b>ADDITIONAL REQUIREMENTS</b>	Minimum of 60 credits of post-secondary studies acceptable to the School of Education, typically arts, fine arts, math, science, music or physical education (see website for more details on subject requirements); Minimum GPA 2.67, Application questionnaire; Two confidential statements from referees. Recommended 15 hours of observation experience in two elementary classrooms.
	<b>IA</b>	<b>INDIGENOUS COHORT</b> Available for students who identify as First Nations, Inuit, or Métis.
<b>BACHELOR OF EDUCATION</b> <i>Secondary (STEM)</i> <b>IA</b>	<b>ADDITIONAL REQUIREMENTS</b>	Four-year Bachelor of Science degree (120 credits) or equivalent in science, technology, engineering or mathematics; Minimum GPA of 2.33 on the most recent 60 credits; 100 volunteer hours; Letter of Intent; Spontaneous written and personal interview; Two confidential statements from referees.
	<b>ADDITIONAL REQUIREMENTS</b>	See <a href="http://tru.ca/bett">tru.ca/bett</a> for more information and contact the program advisor for assistance   <a href="mailto:eadvising@tru.ca">eadvising@tru.ca</a>
<b>EARLY CHILDHOOD EDUCATION DIPLOMA</b> <b>L</b>	<b>ENGLISH</b>	73% in English Studies 12 or English First Peoples 12
	<b>ADDITIONAL REQUIREMENTS</b>	Must be completed prior to the start of the program: 25 hours of volunteer and/or work experience in a licensed childcare facility.

## Health Sciences

### BACHELOR OF SCIENCE IN NURSING

Williams Lake Campus offers the first two years (with transfer to Kamloops in third year) every second year. Next intake is Fall 2026.

**IA**

#### HIGH SCHOOL APPLICANTS

Students who have graduated high school or have completed university preparatory (UPrep) or adult basic education (ABE) coursework. A blend of UPrep/ABE and high school courses may be considered.

OR

Students with up to 9 credits of post-secondary coursework. GPA from these courses will not apply.

**ENGLISH** 73% in English Studies 12 or English First Peoples 12

**MATH** 73% in any Math 12 course

**SCIENCE** 73% in Anatomy and Physiology 12; 73% in Chemistry 11; 73% in one other science 11 or 12

**ADDITIONAL REQUIREMENTS** CASPer Situational Judgement Test; A GPA will be generated using the 5 courses above for admission consideration and ranking

#### POST-SECONDARY APPLICANTS

Students with 12 credits or more of post-secondary coursework (by the application deadline)

**ADMISSION REQUIREMENTS** Grade 12 (or equivalent) or Mature Student status  
Overall GPA of 3.0 or higher in the last 30 credits

Completion of the following 12 credits:

English 1000 level or higher with a C+ minimum

Biology 1000 level or higher with a C+ minimum

Social Science 1000 or higher with C+ minimum


Math/Science 1000 or higher with a C+ minimum

Applicants in this category must have the 4 post-secondary courses noted above. A GPA will be generated for post-secondary coursework. If an applicant has more than 30 credits, the most recent 30 credits will be used for GPA consideration and ranking.




**ADDITIONAL REQUIREMENTS** CASPer Situational Judgement Test



## Health Sciences, continued

<b>PRACTICAL NURSING DIPLOMA</b>	<b>ENGLISH</b>	65% in English Studies 12 or English First Peoples 12
	<b>MATH</b>	60% in Foundations of Math 11 or equivalent
	<b>SCIENCE</b>	60% in Anatomy and Physiology 12; Human Anatomy and Physiology for Practical Nurses (PNUR 1300 or HLTH 1121 at TRU with 65%).
(Williams Lake Campus, next intake September 2026)		
See <a href="http://tru.ca/programs">tru.ca/programs</a> for additional details		
<b>HEALTH CARE ASSISTANT CERTIFICATE</b>	<b>ENGLISH</b>	73% in English Studies 11
	<b>ADDITIONAL REQUIREMENTS</b>	Completion of grade 11 minimum; Additional requirements once accepted can be found at <a href="http://tru.ca/hca">tru.ca/hca</a>
<b>RESPIRATORY THERAPY DIPLOMA</b>	<b>ENGLISH</b>	73% in English Studies 12 or English First Peoples 12
<b>L</b>	<b>MATH</b>	67% in Foundations of Math 12 or Pre-Calculus 12
	<b>SCIENCE</b>	67% in Anatomy and Physiology 12; 67% in Physics 11; 67% in Chemistry 12
	<b>ADDITIONAL REQUIREMENTS</b>	All requirements must be within the last 5 years. Required upon acceptance before Aug. 31: CPR Level C with AED; Program Information Session and/or Hospital RT Department Tour; Criminal record check, Immunization forms.
Fast track stream available see <a href="http://www.tru.ca/rt">www.tru.ca/rt</a> for more information.		
<b>BACHELOR OF HEALTH SCIENCE</b>	<b>ADMISSION REQUIREMENTS</b>	Same requirements as Respiratory Therapy Diploma
<i>Respiratory Therapy Dual Credential</i>		

## Science and Technology

<b>BACHELOR OF COMPUTING SCIENCE</b>	<b>ENGLISH</b>	73% in English Studies 12 or English First Peoples 12
	<b>MATH</b>	67% in Pre-Calculus 12 or Foundations of Math 12 (completed within the last two years)
	Upgrading available in program	
 <b>C</b> 		
<i>TRU offers a dual degree with Bachelor of Computing Science and the Bachelor of Business Administration. Students must meet admission requirements for both programs.</i>		
<b>COMPUTING SCIENCE DIPLOMA</b>	<b>ENGLISH</b>	73% in English Studies 12 or English First Peoples 12
<b>L C</b> 	<b>MATH</b>	67% in Pre-Calculus 12 or Foundations of Math 12 (completed within the last two years)
	Upgrading available in program	
<b>BACHELOR OF ENGINEERING IN COMPUTER ENGINEERING</b>	<b>ENGLISH</b>	73% in English Studies 12 or English First Peoples 12
<b>C</b>	<b>MATH</b>	67% in Pre-Calculus 12
	<b>SCIENCE</b>	67% in Chemistry 11; 67% in Physics 11 (Physics 12 recommended)

## Science and Technology, continued

<b>BACHELOR OF ENGINEERING IN SOFTWARE ENGINEERING</b>	<b>ENGLISH</b>	73% in English Studies 12 or English First Peoples 12
	<b>MATH</b>	67% in Pre-Calculus 12
	<b>SCIENCE</b>	67% in Chemistry 11; 67% in Physics 11
<b>C</b>	<b>ADDITIONAL REQUIREMENTS</b>	Physics 12 with 67% preferred. Recommended courses: Calculus 12, Drafting 12, a computing or information technology course involving computer programming and problem solving using high-level languages such as C/C++, Visual Basic, or Java
<b>ARCHITECTURAL AND ENGINEERING TECHNOLOGY DIPLOMA</b>	<b>ENGLISH</b>	73% in English Studies 12 or English First Peoples 12
	<b>MATH</b>	67% in Foundations of Math 12 or Pre-Calculus 11
	<b>SCIENCE</b>	Physics 11
<b>ENGINEERING TRANSFER - YEAR 1</b>	<b>ENGLISH</b>	73% in English Studies 12 or English First Peoples 12
	<b>MATH</b>	73% in Pre-Calculus 12
	<b>SCIENCE</b>	73% in Chemistry 11 (Chemistry 12 is highly recommend); 73% in Physics 12
	<b>ADDITIONAL REQUIREMENTS</b>	Students lacking Chemistry 12 may still be admitted, but will be unable to complete the first-year courses in two semesters
<b>BACHELOR OF NATURAL RESOURCE SCIENCE</b>	<b>ENGLISH</b>	73% in English Studies 12 or English First Peoples 12
 <b>C</b>	<b>MATH</b>	67% in Pre-Calculus 12
	<b>SCIENCE</b>	67% in Life Sciences 11; 67% in Chemistry 11
	<b>ADDITIONAL REQUIREMENTS</b>	Note: students with Anatomy and Physiology 12, and Chemistry 12 will be given preference. Note: if you do not meet all requirements, you may still be considered for admission.
<b>REGENERATIVE AGRICULTURE CERTIFICATE AND DIPLOMA</b>	<b>ENGLISH</b>	English Studies 12 or English First Peoples 12
(Williams Lake Campus)	<b>MATH</b>	60% in Foundations of Math 11
	<b>ADDITIONAL REQUIREMENTS</b>	Work placement on a working farm or ranch (Students are responsible for finding their own suitable work experience placement)
	<b>VETERINARY TECHNOLOGY DIPLOMA</b>	<b>ENGLISH</b>
	<b>MATH</b>	67% in Foundations of Math 11
	<b>SCIENCE</b>	67% in Life Sciences 11
	<b>ADDITIONAL REQUIREMENTS</b>	Anatomy and Physiology 12 is strongly recommended; Canadian citizenship or permanent resident status; Know/Wonder/Learn document; Interview with a RVT; Intro/Q and A video; Two reference letters (one general, one work-related)
<b>ANIMAL WELFARE CERTIFICATE</b>	<b>ADDITIONAL REQUIREMENTS</b>	Completion of grade 12 or Mature Student Status recommended
Available by Distance Education		

**FIRST NATIONS APPLIED LAND MANAGEMENT CERTIFICATE**

Apply to this program directly through the TULO Center [tulo.ca](http://tulo.ca)

<b>ENGLISH</b>	73% in English Studies 12 or English First Peoples 12
<b>MATH</b>	67% in Foundations of Mathematics 11 or Pre-Calculus 11
<b>ADDITIONAL REQUIREMENTS</b>	Basic computer literacy and familiarity with word processing and spreadsheet software
	Upgrading available in program

**BACHELOR OF SCIENCE**

**C**

<b>ENGLISH</b>	73% in English Studies 12 or English First Peoples 12	<b>Majors and minors:</b> Animal Biology, Biology, Cellular, Molecular and Microbial Biology, Chemistry, Chemical Biology, Ecology and Environmental Biology, Environmental Chemistry, General Science
<b>MATH</b>	67% in Pre-Calculus 12	
<b>SCIENCE</b>	Life Sciences 11 or Anatomy and Physiology 12 with C+; Chemistry 11; Physics 11	
	Upgrading available in program	
<b>ENGLISH</b>	73% in English Studies 12 or English First Peoples 12	<b>Majors:</b> Computing Science, Computing Science and Mathematics, Data Science, Mathematics, Mathematics and Economics, Mathematical Sciences, Physics
<b>MATH</b>	67% in Pre-Calculus 12	
<b>SCIENCE</b>	Chemistry 11; Physics 11	
	Upgrading available in program	
		<b>Minors only:</b> Environmental Economics and Sustainable Development, Management, Archaeology and Geology
		<b>Exit credential after two years:</b> Associate of Science

## Social Work and Human Service

**BACHELOR OF SOCIAL WORK**

**IA**

<b>ADDITIONAL REQUIREMENTS</b>	Year 3 entry; A minimum of 54 credits (60 credits recommended); The credit requirement can be met by general university studies, or a combination of human service certificate/diploma or equivalent with a minimum GPA of 2.67 and general university course work; General university course work must include 3 credits of academic English composition (ENGL 1100 at TRU) or 6 credits of English literature, and SOCW 2060 and SOCW 2120 or equivalent; A minimum GPA of 2.33 on general university coursework is required
--------------------------------	--

**EDUCATION ASSISTANT AND COMMUNITY SUPPORT CERTIFICATE**

**L**

<b>ENGLISH</b>	73% in English Studies 12 or English First Peoples 12
<b>ADDITIONAL REQUIREMENTS</b>	Two reference letters; Canadian citizenship or permanent resident status
	While in the program students will need a criminal record check and proof of immunizations

**HUMAN SERVICE DIPLOMA**

**L**

<b>ENGLISH</b>	73% in English Studies 12 or English First Peoples 12
<b>ADDITIONAL REQUIREMENTS</b>	Two references; Canadian citizenship or permanent resident status

## University and Employment Preparation

**EDUCATION AND SKILLS TRAINING CERTIFICATE PROGRAM (ESTR)**

<b>ADDITIONAL REQUIREMENTS</b>	High school transcripts, reference letter, work or volunteer experience.
--------------------------------	--

**ENGLISH FOR ACADEMIC PURPOSES**

<b>ADDITIONAL REQUIREMENTS</b>	See <a href="http://tru.ca/eap">tru.ca/eap</a> for admission requirements
--------------------------------	---

**UNIVERSITY PREPARATION (UPGRADING)**

**⊕**

<b>ADDITIONAL REQUIREMENTS</b>	At least 17 years of age or one year out of school; Canadian citizen; permanent resident
--------------------------------	--





# Trades and Industrial Technology

## FOUNDATION CERTIFICATES IN CONSTRUCTION, MECHANICAL AND WELDING TRADES

### MINIMUM ADMISSION REQUIREMENTS

BC high school graduation (or equivalent) or mature student status.  
English 11 with a minimum of C (or equivalent)  
Math 11 with a minimum grade of C (any Math 11 or equivalent)  
Note: some programs may still require the Accuplacer assessment for admission.

Automotive Service Technician  
Carpenter (Residential Construction)  
Electrician (construction),  
Heavy Mechanical (Diesel Engine, Heavy Duty Equipment)  
Transport Trailer Technician  
Truck and Transport Mechanic  
Industrial Mechanic (Millwright/Machinist)  
Instrumentation and Control Technician  
Refrigeration and Air Conditioning Mechanic  
Plumber  
Welder

## APPRENTICESHIPS IN CONSTRUCTION, MECHANICAL AND WELDING TRADES

### MINIMUM ADMISSION REQUIREMENTS

Valid SkilledTradesBC number (indentured/sponsored by an employer); Working in your trade

Automotive Service Technician, Carpenter, Circular Saw Filer (Williams Lake), Diesel Engine Mechanic, Electrician (Construction, Industrial), Gasfitter Class B, Heavy Duty Equipment Technician, Industrial Mechanic (Millwright), Instrumentation and Control Technician, Meatcutter, Plumber, Refrigeration and Air Conditioning Mechanic, Truck and Transport Mechanic, Transport Trailer Technician, Welder

## HORTICULTURE CERTIFICATE

### MINIMUM ADMISSION REQUIREMENTS

BC grade 12 or equivalent, or Mature Student Status. Attend a program orientation session; Recommended: be in good physical condition and have a strong interest in plants and hands-on work

## HORTICULTURE MANAGEMENT DIPLOMA

### MINIMUM ADMISSION REQUIREMENTS

Completion of a recognized one-year horticulture certificate which includes six credits of approved post-secondary English courses; Some diploma courses may require specific pre-requisites

## POWER ENGINEERING 4TH CLASS CERTIFICATE

### MINIMUM ADMISSION REQUIREMENTS

BC grade 12 or equivalent, Math 11 or Pre-Calculus 12, successful entry assessment

## PROFESSIONAL COOK LEVEL 1 AND 2 CULINARY ARTS CERTIFICATE

### MINIMUM ADMISSION REQUIREMENTS

Grade 10 (grade 12 preferred) or Mature Student Status; Entry assessment for Math and English may be required; Interview with program coordinator, Food Safe Level 1 required by first week of classes.

## RETAIL MEAT PROCESSING FOUNDATION CERTIFICATE

### ADDITIONAL REQUIREMENTS

Grade 10 (grade 12 preferred); Food Safe Level 1; Successful Entry Assessment; Canadian citizenship or permanent resident status; Interview and Orientation with program coordinator

## Trades and Industrial Technology, continued

## WATER AND WASTEWATER TECHNOLOGY DIPLOMA

### MINIMUM ADMISSION REQUIREMENTS

BC grade 12 or equivalent

## WATER AND WASTEWATER UTILITIES CERTIFICATE

### MINIMUM ADMISSION REQUIREMENTS

BC grade 12 or equivalent



# Graduate and Post-graduate Programs

Take your education to the next level. Our collaborative research culture and integrated approach to graduate studies, innovation and knowledge translation provide the dynamic learning environment necessary for inquiry, discovery and leadership in your field.

[tru.ca/gradstudies](https://tru.ca/gradstudies)

[Master of Arts in Human Rights and Social Justice](#)

[Master of Business Administration](#)

[Master of Education](#)

[Master in Environmental Economics and Management](#)

[Master of Nursing](#)

[Master of Nursing - Nurse Practitioner](#)

[Master of Science in Data Science](#)

[Master of Science in Environmental Economics and Management](#)

[Master of Science in Environmental Science](#)

[Certificate in Educational Studies](#)

[Diploma in Business Administration](#)

## ADMISSION REQUIREMENTS

See [tru.ca/graduate](https://tru.ca/graduate) for admission requirements for master's degrees

# \$180,000

in scholarships available exclusively to graduate students

### Law - Juris Doctor

You must have obtained an undergraduate degree or successfully completed the first three years (min. 90 credits) or more of an undergraduate degree.

See [tru.ca/programs](https://tru.ca/programs) for admission requirements

### Post-Baccalaureate Programs

**Post-Baccalaureate Diplomas:** Accounting, Adventure Studies, Applied Data Science, Business Administration, Economics, Economics and Political Studies, Entrepreneurship, Finance, Human Resource Management, International Business, Managing Festivals and Events, Marketing, Math and Economics, Politics and International Studies, Supply Chain Management, Tourism Destination Development

**Post-Baccalaureate Certificates:** Teaching English to Speakers of Other Languages (TESL), Tourism

**Post-Diploma Certificates:** Infant and Toddler Educator, Special Needs Educator



# Know Your Costs

University is an investment into your future. At TRU, you receive an excellent education, and we are proud to offer competitive tuition and student fees.

All programs are different, and tuition fees vary based on the

number of credits you choose to take each semester, and whether you have required labs.

Learn more about tuition and fees — and try out our interactive Cost Estimator — at [tru.ca/tuition](https://tru.ca/tuition)

## HOW MUCH WILL FIRST YEAR COST?

### DEGREE



TUITION  
**\$4,761**  
FEES  
**\$1,418**

\*Includes U-Pass and Medical and Dental



BOOKS AND SUPPLIES  
**\$1,000**



RESIDENCE  
**\$4,388–9,100**

Estimated expenses are based on two semesters with five courses each in the Bachelor of Arts program.

### TRADES



TUITION  
**\$446/mo**  
FEES  
**\$136/mo**



BOOKS AND SUPPLIES  
**\$100–1,500**



RESIDENCE  
**\$4,388–9,100**

Estimated expenses are based on fees for vocational full time programs which range from 6-10 months in length.

*These fees are for the 2024-2025 academic year.*

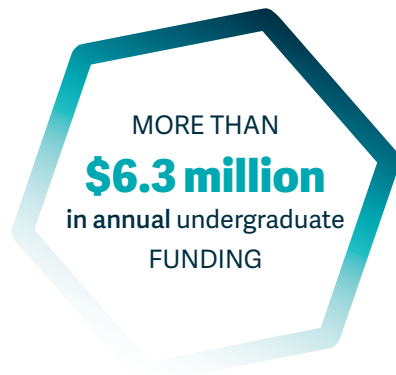


Plan your own budget for a year at TRU | [tru.ca/cost](https://tru.ca/cost)



# Student Awards and Financial Aid

UNDERGRADUATE ENTRANCE | Applications open in December



MORE THAN  
**\$6.3 million**  
in annual undergraduate  
FUNDING

**Don't miss out!**  
Be sure to check opening  
dates and deadlines and  
apply ahead of time:

[tru.ca/entrance](https://tru.ca/entrance)

## General Undergraduate Entrance Scholarships

Recognizes academic excellence, leadership, service and accomplishments that foster TRU's values

**UP TO \$30,000**  
PER SCHOLARSHIP

## TRU Assurance Bursaries

For new and returning bachelor degree students, with preference to students enrolled in the BA, BBA, BSc, BCDJ or BCS, and/or from the TRU region

**UP TO \$20,000**  
PER BURSARY

## TRU Undergraduate Entrance Awards

Recognizes leadership, service and accomplishments that foster TRU's values, with preference to first generation university students

**UP TO \$4,000**  
PER AWARD

## TRU Undergraduate Entrance Bursaries

For new, full-time, diploma or bachelor degree students facing financial hardship

**UP TO \$4,000**  
PER BURSARY

*\*For full-time, campus bachelor degree or diploma students who are Canadian citizens or permanent residents*

## DEADLINES TO APPLY FOR SCHOLARSHIPS, AWARDS AND BURSARIES

Entrance Scholarships <b>March 1, 2025</b>	Entrance Awards <b>April 1, 2025</b>	Assurance Bursary <b>End of May 2025</b>
---	---	---

DEFINITIONS	TYPE	Non-Repayable	Repayable	Application Required	Academic Achievement	Financial Need	Additional Requirements
	AWARD	✓		✓ SOMETIMES	recognizing academic and/or extracurricular accomplishment 2.00 GPA or equivalent		minimum 60% course load
	BURSARY	✓		✓	2.00 GPA or equivalent	✓	minimum 60% course load (usually) already approved for government student loans (usually)
	SCHOLARSHIP	✓		✓ SOMETIMES	3.50 GPA minimum		minimum 80% course load and it is to be used for further study (usually)
	GRANT	✓		✓ NORMALLY	2.00 GPA or equivalent	✓	
	LOAN		✓	✓		✓	meet criteria such as residence, program of study, course load, adequate performance in studies
	PRIZE	✓			recognizing academic achievement in program of study		may be a certificate or plaque, a cash prize, or a combination

## PROVINCIAL TUITION WAIVER

This fund waives tuition and fees for eligible former BC Youth In Care who are looking to attend TRU. This requires a separate application and students must have been admitted to TRU before accessing this waiver.



## CO-OPERATIVE EDUCATION (CO-OP)

Co-operative Education blends on-campus learning with practical applied learning. Enhance your education with career-related work experience before graduation.

Students alternate study terms with paid, monitored work-terms in professional industry, non-profit, private business, and public sector organizations.

[tru.ca/coop](https://tru.ca/coop)

## WORKSTUDY

WorkStudy is a TRU-funded financial assistance program which offers an opportunity for Canadian students to work part-time on campus in positions that accommodate their studies.

[tru.ca/awards/work-study](https://tru.ca/awards/work-study)

## FUNDING OPTIONS FOR INDIGENOUS STUDENTS

There are many avenues for funding your education. Some Indigenous students are eligible to receive support from their band or other organizations to pay for post-secondary education.

### Sponsorship

Confirm the process your Nation follows for post-secondary funding, then connect with us. Contact your band, Métis or other organization for information regarding the application process. You will need to submit a Consent to Release Personal Information Form (Third Party) so your sponsor has access to your TRU information. Your sponsor will need to submit the TRU Sponsorship Application form before your registration date, otherwise you will have to pay the necessary

commitment fee to complete your registration. It will take approximately two weeks for TRU to set up your tuition sponsorship contract. It is your responsibility to ensure your sponsor receives your course registration data form, which is their invoice for your costs.

### Possible funding sources for Indigenous students in Undergraduate Degree programs

- Band funding
- Métis funding
- Scholarships and awards
- External sources (eg. Indspire, Irving K. Barber Award, New Relationship Trust (BC First Nations))
- Student aid



Talk to our Qelmúcw (Indigenous) Future Student Advisors for more information, or if you are interested in diploma or certificate programs, as funding schedules may differ.

**WANT MORE FUNDING OPTIONS?**  
[tru.ca/awards/external-funding](https://tru.ca/awards/external-funding)  
to find external award resources.

**QUESTIONS?** Contact Student Awards and Financial Aid  
250-828-5024 | [entrance@tru.ca](mailto:entrance@tru.ca)



# NEXT STEPS

## Future Students Office

Future Student Advisors and Qelmúcw (Indigenous) Future Student Advisors are here to help you navigate first steps:

- Finding the right program
- Applications
- Sponsorship support
- Scholarship opportunities
- Housing and student life
- General TRU information
- Campus visits and tours

**NEED HELP?**

Book an appointment with the Future Students office



Scan QR to book

## QUESTIONS?

850 Sk'lep Trail, Kamloops, BC, Canada  
 T: 250-828-5006 | futurestudents@tru.ca | tru.ca/future



# FUTURE STUDENT TIMELINE

YOUR STEPS TO BECOMING A TRU STUDENT

### 1) Explore programs

- Connect with a Future Student Advisor or Qelmúcw Student Advisor  
[tru.ca/programs](http://tru.ca/programs)



### 2) Join a Discover TRU or program information session

- [tru.ca/infosessions](http://tru.ca/infosessions)



### 3) Choose your program and review admission requirements

- Admission Requirements | [tru.ca/reqs](http://tru.ca/reqs)
- Out of province applicant? Review equivalencies | [tru.ca/equivalents](http://tru.ca/equivalents)



### 4) Apply

- Apply online on or after **October 1** | [tru.ca/apply](http://tru.ca/apply)
- Pay the application fee



### 5) Submit documents

- Submit high school and/or post-secondary transcripts and additional requirements  
[tru.ca/transcript](http://tru.ca/transcript)
- Track application status in myTRU account | [mytru.ca](http://mytru.ca)



### 6) Offer of Admission

- Early offers for many programs start in December
- Some limited capacity programs vary by application deadline
- If an offer isn't made, connect with the Future Students Office to discuss your options



## DON'T FORGET!

### Apply for Entrance Scholarships and Awards

- Applications open in December
- Entrance Scholarship deadline: **March 1**
- Entrance Award deadline: **April 1**

### Explore on campus housing options

- Priority housing if you apply to TRU by **January 31**  
[tru.ca/housing](http://tru.ca/housing)



QUESTIONS? CONTACT US!



**Enrolment Services**

805 TRU Way  
Kamloops, BC V2C 0C8  
250-828-5006  
1-888-663-1653

[futurestudents@tru.ca](mailto:futurestudents@tru.ca)  
[futureindigenous@tru.ca](mailto:futureindigenous@tru.ca)

**[tru.ca/future](https://tru.ca/future)**

FOLLOW US ON SOCIAL MEDIA



@ThompsonRiversU

**#mytru**

**Accessibility Services**

250-828-5023  
[as@tru.ca](mailto:as@tru.ca)

**Assessment Centre (Accuplacer)**

250-828-5470  
[assess@tru.ca](mailto:assess@tru.ca)  
[tru.ca/assessment](https://tru.ca/assessment)

**Student Awards**

250-828-5024  
[finaid@tru.ca](mailto:finaid@tru.ca)  
[tru.ca/awards](https://tru.ca/awards)

**Housing**

[tru.ca/housing](https://tru.ca/housing)

**Career and Experiential Learning**

250-371-5627  
[careereducation@tru.ca](mailto:careereducation@tru.ca)  
[tru.ca/cel](https://tru.ca/cel)

**Campus Visits**

[tru.ca/tours](https://tru.ca/tours)

